



EMPATHY *to* IMPACT APPROACH



A SPECIAL OPPORTUNITY FOR LUTHERAN EDUCATORS:

A PreK-12 curriculum enhancing approach to level up global citizenship, reciprocal service learning, and education for sustainable development.

THURSDAY 5 & FRIDAY 6 JUNE 2025
ADELAIDE - IMMANUEL LUTHERAN COLLEGE



Secure
your
spot
now!

THURSDAY 12 & FRIDAY 13 JUNE 2025
MELBOURNE – LEVNT REGIONAL OFFICE



Secure
your
spot
now!

For an amazing,
subsidised price of
\$295 for 2 days
(Travel at own cost)



ABOUT THIS TWO-DAY WORKSHOP:

The Inspire Citizens Empathy to Impact approach follows the Care- Aware- Able- Impact framework. This is a service learning cycle, an enhanced inquiry cycle, and project-based learning cycle, and a method of enhancing any curriculum approach. Participants will develop student empathy by engaging with the Sustainable Development Goals, Social Justice Standards, Well-being indicators, and more.

Participants will look for opportunities to enhance action through Inspire Citizens' Action menu and community assets mapping, participants will explore tools for authentic investigation to allow students to become more deeply aware of the issues that they care about, and all will be integrated into curricular outcomes to enhance existing curriculum for global citizenship, service, and action for sustainability.

Educators will walk away with a plan to engage learners ready to go.

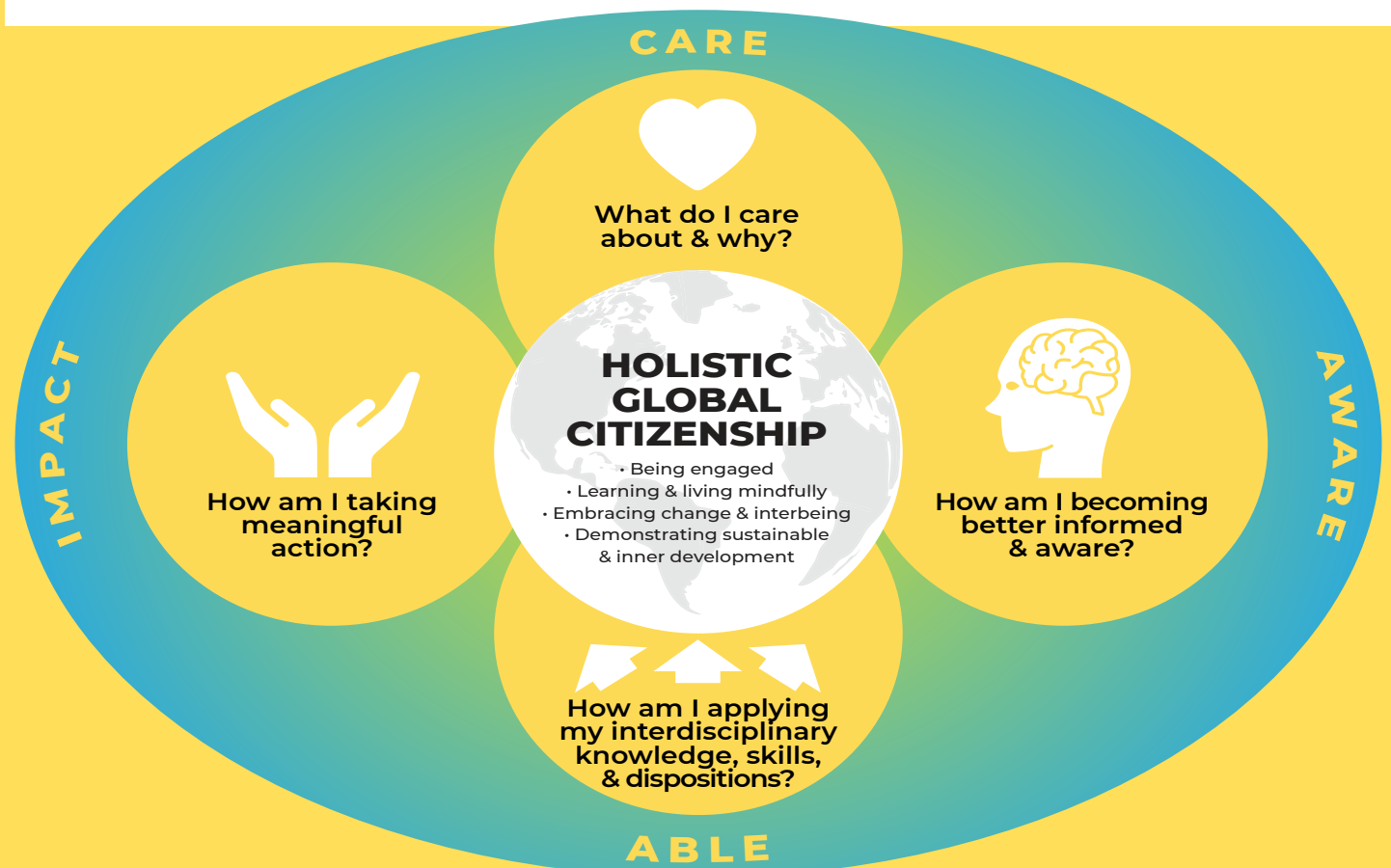
WORKSHOP GOALS

This hands-on and interactive workshop will equip educators with:

- ✓ Strategies to use the Empathy to Impact Model to enhance a current project design
- ✓ A toolkit for integrating sustainable development into inquiry-based learning
- ✓ Co-designed, reimagined learning plans that align with Free to Flourish
- ✓ Gain hands-on engagement through sharing, collaboration, providing feedback & co-creation

WHO SHOULD ATTEND?

Curriculum leaders, classroom teachers, and teaching teams passionate about integrating **local and global engagement, sustainability, and compassionate impact into their teaching.**
BE PART OF A MOVEMENT WHERE LEARNING LEADS TO ACTION AND EMPATHY DRIVES IMPACT.



For more information about Inspire Citizens, visit inspirecitizens.org

Plus, check out the Inspire Citizens podcast inspirecitizens.org/empathy-to-impact-podcast